



C.T. FREIGHT PTY LTD

A.C.N. 002 489 705

INTERNATIONAL FREIGHT FORWARDERS

A.B.N. 89 002 489 705

Sydney H/O
C.T. Freight
2-4 Bradford Street
Alexandria NSW 2015
PO Box 88
Mascot NSW 2020
Tel: 61-2-8337 8888
Fax: 62-2-9693 5670
Email:
ctsyd@ctfreight.com

Melbourne
C.T. Freight
4 International Square
Tullamarine VIC 3043
Tel: 61-3-9338 8388
Fax: 61-3-9330 3030
Email:
ctmel@ctfreight.com

Cairns
C.T. Freight
10 Ogden Street
Bungalow
Cairns QLD 4870
Tel: 61-7-4035 5880
Fax: 61-7-4035 5808
Email:
ctcns@ctfrigh.com

Perth
C.T. Freight
10/477 Orrong Road
Welshpool WA 6106
Tel: 61-8-9356 3688
Fax: 61-8-9356 3488
Email:
ctper@ctfreight.com

Brisbane
C.T. Freight
729 Macarthur Ave
Central
Eagle Farm QLD
4009
Tel: 61-7-3621 1288
Fax: 61-7-3260 1311
Email:
ctbnc@ctfreigh.com

Adelaide
C.T. Freight
5 Frank Collopy Court
Adelaide Airport 5950
PO Box 2008
Hilton SA 5033
Tel: 61-8-8234 4500
Fax: 61-8-8234 4694
Email:
ctadl@ctfreight.com

Auckland NZ
C.T. Freight
C/- NZ Post
Distribution
Centre
Torn Pearce Drive
Auckland International
Airport NZ
Tel: 64-9-275 1634
Fax: 64-9-275 8837
Email:
kane@ctfreight.co.nz

Singapore
United Kingdom
Los Angeles
Houston

April 2008

C T Freight up close with new Cathay Pacific Cargo 747-400ERF

CATHAY Pacific Airways' cargo business has entered a new era following the arrival of the airline's first Boeing 747-400ERF 'Extended Range Freighter'. The new delivery marks the beginning of a significant enhancement of the freighter fleet, with the addition of newer, more efficient aircraft coupled with the retirement of the airline's older Boeing 747-200 classic freighters.

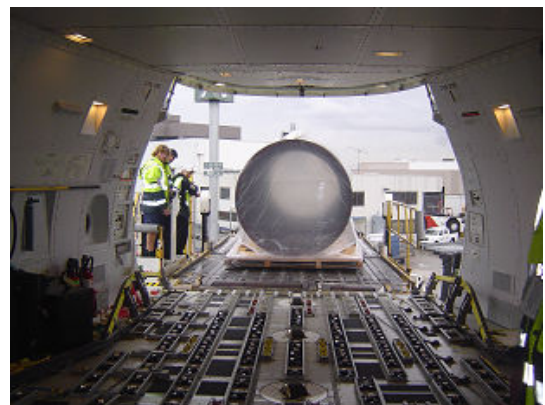
The aircraft, has a higher maximum takeoff weight than existing Boeing 747-400 freighters in the fleet, achieved by using lighter materials. Director and general manager, cargo, Ron Mathison, said: "With fuel prices reaching historical highs, it is appropriate that we are equipping our fleet with new, far more efficient freighters that will have a much-reduced environmental impact.

The introduction of the new 'Extended Range Freighters' will enable us to move greater amounts of freight in a more efficient way, adding a further boost to Hong Kong's position as the world's leading international airfreight hub."

CT Freight recently attended a tour of the new 747-400ERF.



The new Boeing 747-400ERF – the first of six to be delivered by next year – was handed over to Cathay Pacific in Seattle.



Australian and Indian Governments hold talks on air services

A high-level aviation and infrastructure Australian delegation to India is planned later this year or early in 2009. This was the outcome of a meeting between Australia's minister for infrastructure, transport and regional development, Anthony Albanese, and India's minister for civil aviation, Shri Praful Patel.

Albanese said the two ministers had discussed a range of issues important to both countries, including air services, opportunities for Australian companies to contribute to aviation and airport infrastructure development in India, international efforts to reduce greenhouse emissions and co-operation in the areas of transport security and aviation safety.

He said there were "enormous opportunities" for Australian companies to assist India as it moves to invest around A\$500 billion in infrastructure development over the next five years.

In particular, as one of the world's fastest-developing economies, India's demand for domestic and international aviation services is booming, with hundreds of new airports likely to be built in coming years.



Customs acts to fix ICS glitches

The Australian Customs Service (Customs) says Integrated Cargo System (ICS) EDI reference files on the Cargo Support website are out of date and this may impact on the use of exchange rate calculations on Import Declarations through the use of third party software applications. Customs has suggested as an interim workaround forwarders use the ICS Customs Interactive (CI) which contains up to date reference information.

Meanwhile, several other issues raised by forwarders following the move of the Customs Connect Facility (CCF), the final component in the transition for the Integrated Cargo System (ICS), have effectively been dealt with by Customs following representation by the Customs Brokers and Forwarders Council of Australia (CBFCA).

Several users complained that they could not gain access to interactive services. Customs identified the problem as configuration in the gateway that was related to a technical message size parameter. The parameter has been changed and these external users can now access the ICS. Some external users also reported slow response times to the CI&SC. This has been linked to printing and log on issues and Customs says these have been resolved.

The CBFCA is continuing to monitor ICS performance and says it wants to hear of any further problems.



Transport sector continues relief efforts to quake and cyclone zones

The world transport sector continued its efforts this week to provide relief to the victims of the Burmese cyclone and the Sichuan earthquake that have taken tens of thousands of lives.

AP Moller-Maersk Group has sponsored a donation of RMB4 million (US\$572,000), along with its employees, to "show their deepest condolences to the victims of the Sichuan earthquake." The group's Chengdou office has plans to send men to the epicentre to help in the rescue.

AP Moller Maersk Group has donated CNY2 million to the Chinese commerce ministry towards the emergency rescue work. The donation came May 13, hours after the earthquake happened. During the past three days, Maersk employees have donated CNY1 million. The company will match every donation made by an employee.

Korean Air continues to operate special charter flights to move relief to China and Myanmar. A Korean Air A300-600 freighter goes to Yangon International Airport carrying relief goods procured by the Korean government and the Korea International Cooperation Agency (KOICA), which include 30 tons of medical supplies and 10 tons of cables to restore electric power supply.

FedEx Express and JEN, a disaster-relief non-profit organisation has announced joint programmes to help revitalise an area affected by the China earthquake. Up to 10 FedEx employees will volunteer three days of their time to work together with members of the local community to stem the decline in population following the quake. In addition, FedEx is donating to support JEN's mission. JEN was established in 1994 to provide emergency assistance in the countries of the former Yugoslavia. Since then, JEN has been offering support to people stricken by hardship from conflicts and disasters. Heart to Heart International, a global humanitarian organisation sent US\$1.5 million in supplies to Sichuan province by Fedex, which delivered a plane load of pharmaceuticals, medical

supplies, blankets and tarps from Kansas City to Chengdu.

The United Airlines Foundation is matching up to US\$50,000 in donations from employees and will give out up to 5 million frequent flyer mile-500 bonus miles to each Mileage Plus customer who donates at least \$50 to the American Red Cross through united.com.

Last week, Korea's Hanjin Group, including Korean Air, have donated relief goods to the victims of the devastating 7.8 scale earthquake in China's south western Sichuan province.

Air China enhanced its capacity for disaster relief, allocating 91 flights for evacuation of stranded passengers in Chengdu and cancelling 24 normal flights for urgent disaster relief. Shenzhen's Jade Cargo International, deployed a Boeing 747-400ER freighter to Tianjin Binhai International Airport where 100 tons of relief material were loaded for quake-stricken Chengdu, operating eight flights, moving 780 tons: three flights from Shenzhen, four from Tianjin, and one from Nanning, all going to Chengdu.

CT moves 4WD's to Indonesia



Clive Thomas -
All At C.T.Freight

This newsletter is published as an information service and without assuming a duty of care. It contains general information only and should not be relied on as a substitute for legal or professional advice.